

ARIZONA

HIGHWAYS AND ROADS WALL MAP

LEGEND

- SITE OR SETTLEMENT
- UNDER 1,000 POP.
- 1,000 TO 5,000 POP.
- 5,000 TO 10,000 POP.
- 10,000 TO 50,000 POP.
- 50,000 AND OVER POP.
- COUNTY SEAT
- STATE CAPITAL

ROADS

- LIMITED ACCESS HIGHWAY
- DIVIDED HIGHWAY
- PRINCIPAL PAVED HIGHWAY
- OTHER PAVED HIGHWAY
- GRADED MAINTAINED ROADWAY
- GRAVEL ROADWAY
- INTERCHANGE EXIT NUMBER
- INTERSTATE INTERCHANGE
- PAULROAD
- COUNTY BOUNDARY
- STATE BOUNDARY
- LATTITUDE AND LONGITUDE LINES
- POINT OF INTEREST
- MOUNTAIN PEAK
- AIRPORT
- MILITARY
- INTERSTATE HIGHWAY
- U.S. HIGHWAY
- STATE HIGHWAY
- INDIAN ROUTE
- MEDIAN HIGHWAY

NATURAL FEATURES

- NATIONAL FOREST
- INDIAN RESERVATION/COMMUNITY
- MILITARY RESERVATION
- NATIONAL PARK
- NATIONAL MONUMENT
- WILDLIFE REFUGE OR CONSERVATION AREA
- WILDERNESS AREA
- URBAN AREA
- SALINE RIVER
- CANAL
- RIVER
- STREAM OR WASH
- LAKE
- DRY LAKE

GRID

- TOWNSHIP AND RANGE LINES
- BASE LINES AND MERIDIANS

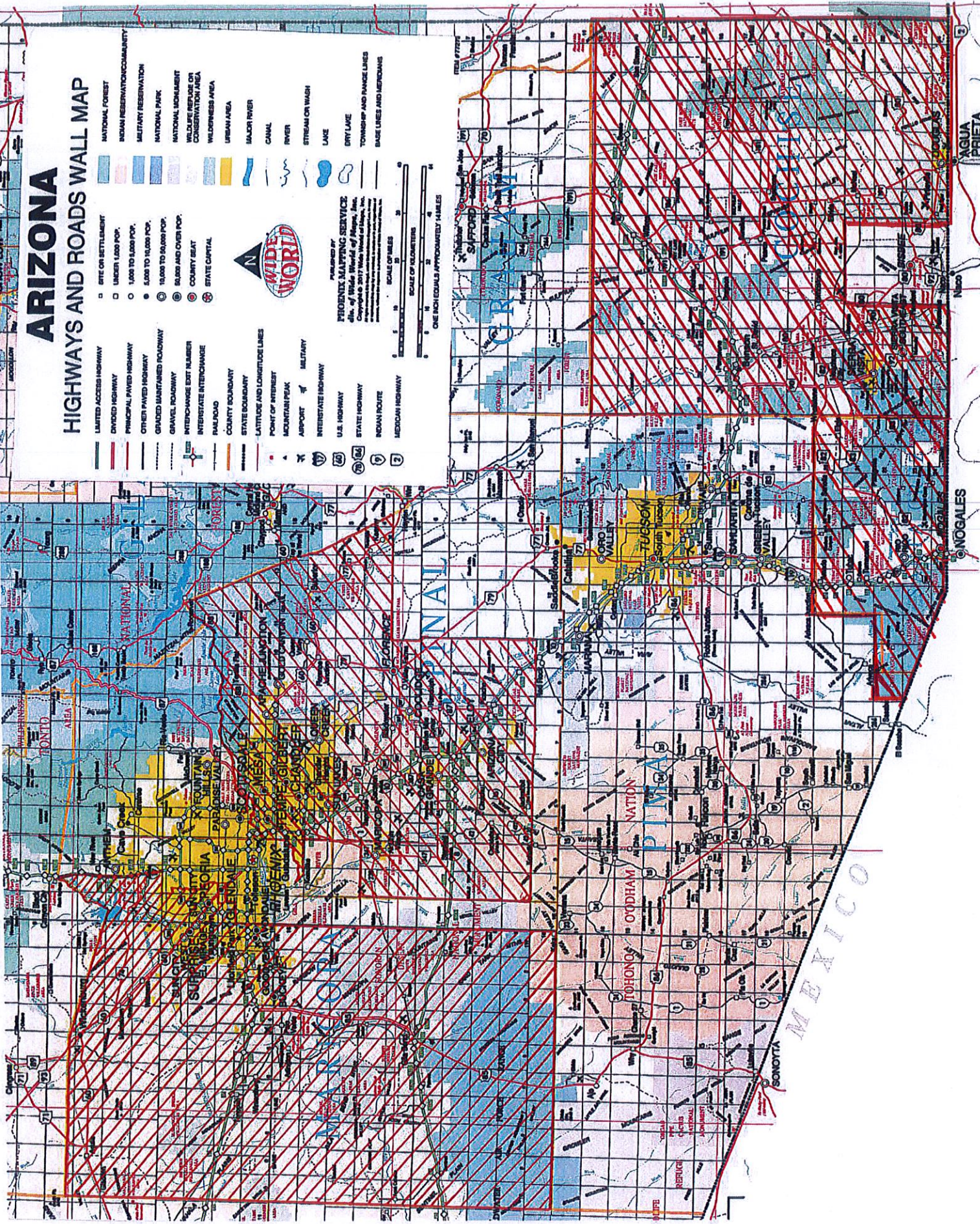
SCALE

SCALE OF MILES: 0 10 20 30 40

SCALE OF KILOMETERS: 0 10 20 30 40

ONE INCH EQUALS APPROXIMATELY 63,360 INCHES

PUBLISHED BY
PROTEXT MAPPING SERVICE
 Div. of Wide World of Maps, Inc.
 Copyright © 2007 Wide World of Maps, Inc.
 All rights reserved. No part of this publication may be reproduced without the written permission of the publisher.



AGUA PRIETA

SONOYA

MEXICO